



FSG Open Print

JTAPI (Job Ticket API)

Claudia Alimpich
IBM Printing Systems Division
Boulder Colorado
alimpich@us.ibm.com

Introduction

- JTAPI stands for:
 - Job Ticket Application Programming Interface
 - Pronounced “jay-tappy” or “Job Ticket API”

- A job ticket contains:
 - **Instructions** describing how to process and/or print a job
 - **Information** about the results of a job as it is processed and/or printed

- A JTAPI job ticket is an electronic replacement of manual hard copy instructions and information

Objectives

- To create and consume job tickets
- To be job ticket syntax neutral
- To isolate the application from the content of the job ticket
- To be programming language neutral
- To import and export multiple job ticket formats

Accomplishments

- Feb 2002
 - Began job ticket discussions in FSG Open Print

- June 2002
 - Initial JTAPI proposal
 - Chartered FSG JT working group

- Nov 2002
 - Created IPP to JDF mapping table
 - In cooperation with PODi and CIP4 Digital Printing working groups



- Dec 2002

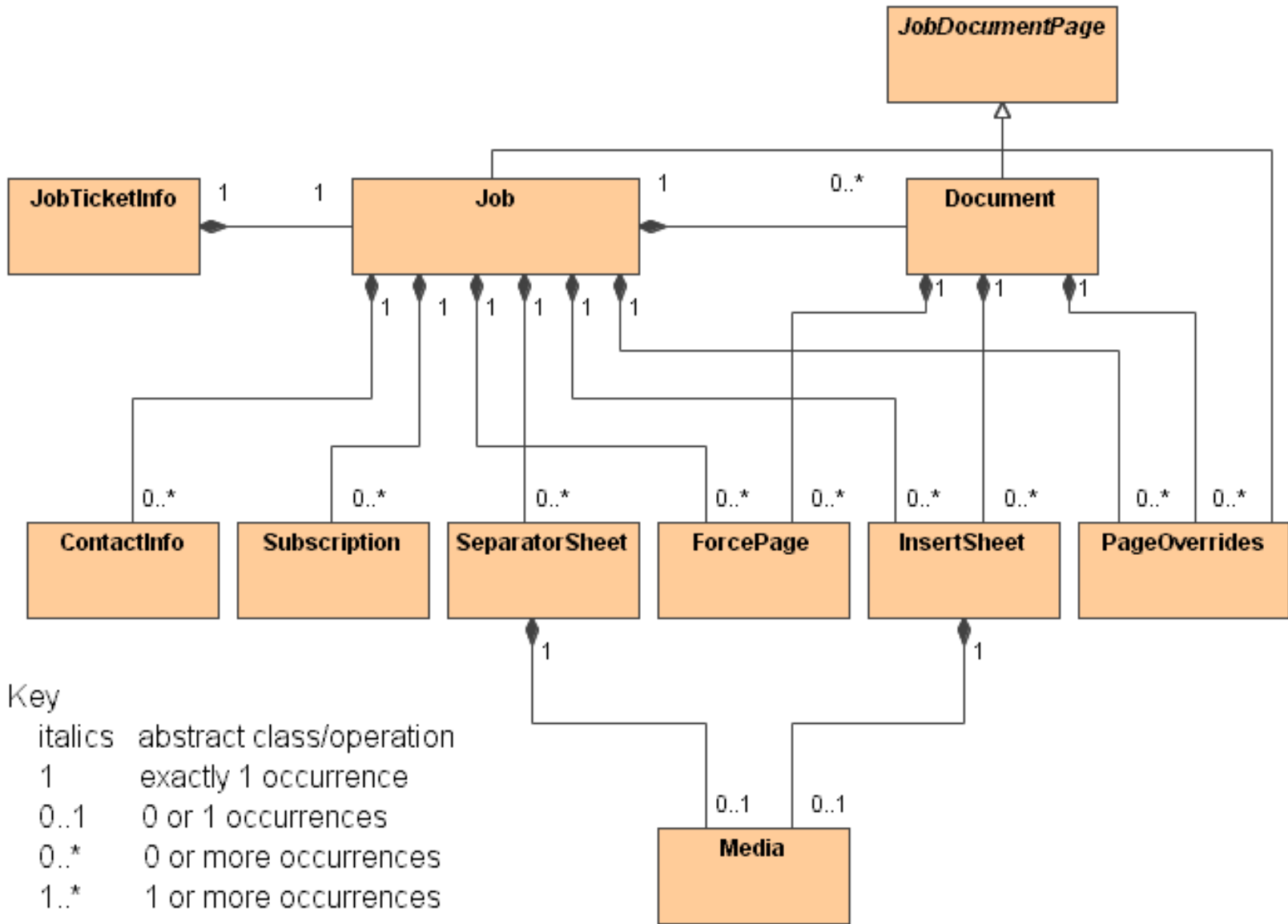
- Prioritized features/functions of JTAPI 1.0

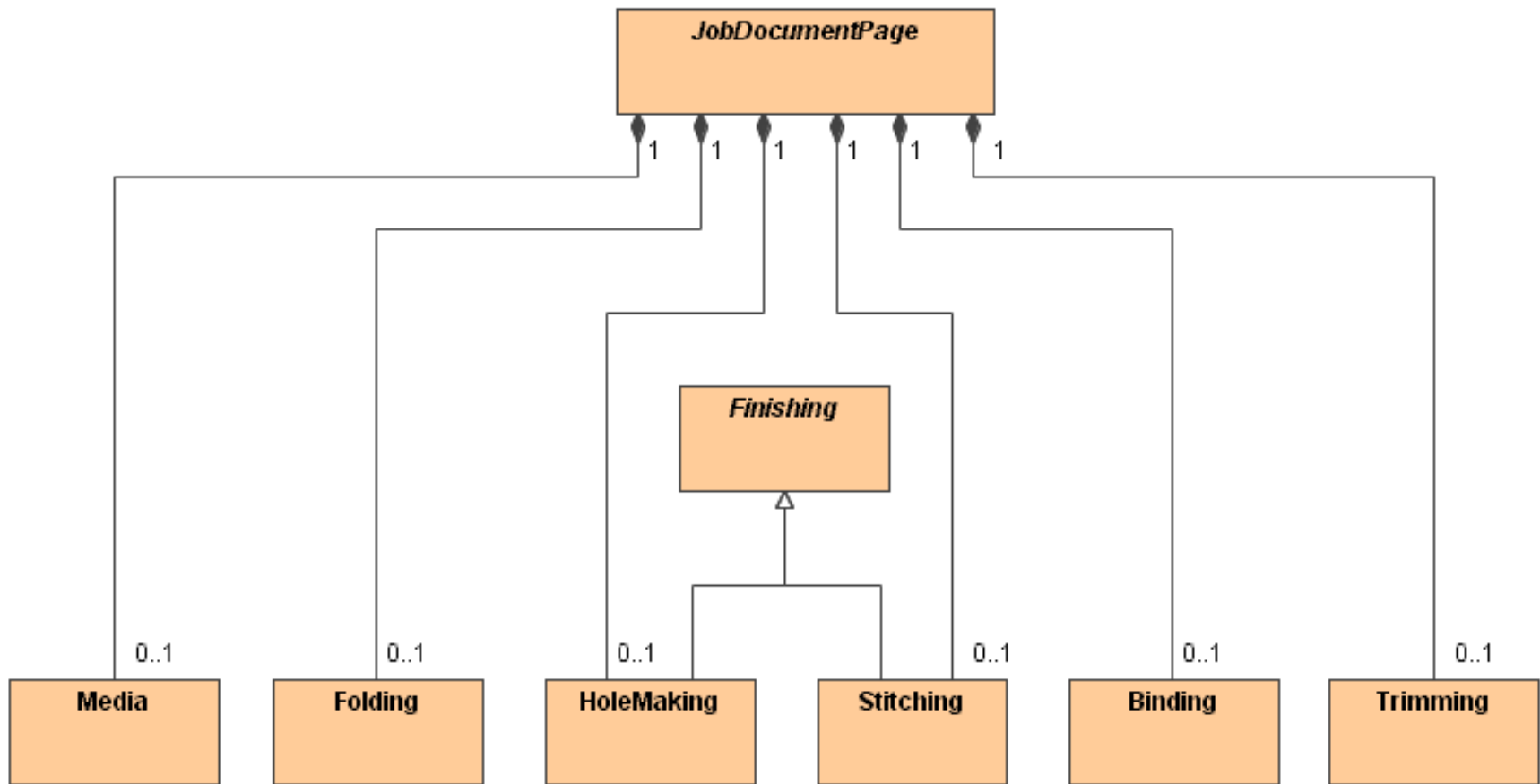
- March 2003

- Completed detailed JTAPI UML diagrams
 - 20 objects and 33 enumerations
 - 16 draft versions

Details

- Data/object model that is object oriented
- Defines objects that are familiar to the printing industry
 - Job, Document, Insert Sheet, Media, Stitching, HoleMaking, etc.
- Defines relationship between objects
- Defines operations to be performed on objects
- Defines attributes of objects
- Defines well-known enumerated values of all attributes





Complete set of UML diagrams:

ftp://ftp.pwg.org/pub/pwg/fsg/jobticket/JTAPI_Diagrams/

Job Ticket Formats

- CIP4 JDF (Job Definition Format) Job Ticket
 - Defined by CIP4, a world wide standards body with over 140 members
 - Open, extensible, XML-based job ticket standard
 - JDF Specification versions
 - 1.0 released April 2001
 - 1.1 released April 2002
 - 1.2 to be released mid 2003

- PWG Job Ticket
 - Proposed future work item for PWG
 - To be based on PWG Semantic Model
 - To be XML-based

JTAPI Implementations

■ IBM

- Used in job submission GUI and printer control unit that was shipped in December 2002
- Written in C language (binding of neutral JTAPI)
- Based on an early version of JTAPI (August 2002)
- Based on an early version of JDF ICS (Interoperability Conformance Specification) for Digital Printing

What's next

- Create JTAPI 1.0 Specification
- Create JTAPI 1.0 programming language bindings
 - C header files
 - Java interface files
- Create JTAPI 1.0 reference implementation

Issues

- Language bindings for JTAPI 1.0
 - Who will create language bindings and when?

- Reference implementation of JTAPI 1.0
 - Who will create reference implementation and when?
 - Who will write the conformance test suite and when?
 - Who will perform conformance testing and when?

JT Working Group Information

■ Active participants

- Claudia Alimpich (IBM) - chair
- Tom Hastings (Xerox)
- Till Kamppeter (MandrakeSoft)
- Ira McDonald (High North Inc)
- Glen Petrie (Epson)

■ Previous contributors

- Norm Jacobs (Sun)
- Olaf Meeuwissen (Epson Kowa)
- Pete Zannucci (IBM)

- Weekly FSG Job Ticket conference calls
 - Tuesdays at 3:00 PM US Eastern for 1-2 hours

- To subscribe to FSG Job Ticket mailing list:
 - <http://freestandards.org/mailman/listinfo/printing-jobticket>

- To post a message to FSG Job Ticket mailing list
 - printing-jobticket@freestandards.org

- To view FSG Job Ticket mailing list archives
 - <http://freestandards.org/mailman/listinfo/printing-jobticket>

- To find FSG Job Ticket documents
 - <ftp://ftp.pwg.org/pub/pwg/fsg/jobticket/>



Thanks for your time and interest!

- Questions and/or comments